

TYRE LABELS EXPLAINED

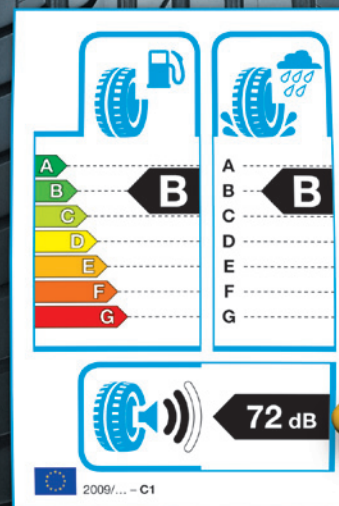
SAFE TYRES SAVE LIVES

As well as considering these three key criteria, you may have additional requirements or other factors to consider when selecting your replacement tyres. Your local tyre specialist will be able to help you with this.

It is also important to remember that correct tyre care and maintenance is essential for your road safety and tyre life.

For further information, visit tyresafe.org.


TyreSafe
tyresafe.org



To help you make an informed choice about safer and more environmentally friendly driving, from 1st November 2012 all new car tyre labels will be labelled according to their performance in three key areas.

The performance measures displayed on the label will rate the tyre's fuel efficiency, wet braking performance and exterior noise emission.

The graphics used on the labels are similar to those found on many new domestic appliances, cars and even buildings.

FUEL EFFICIENCY

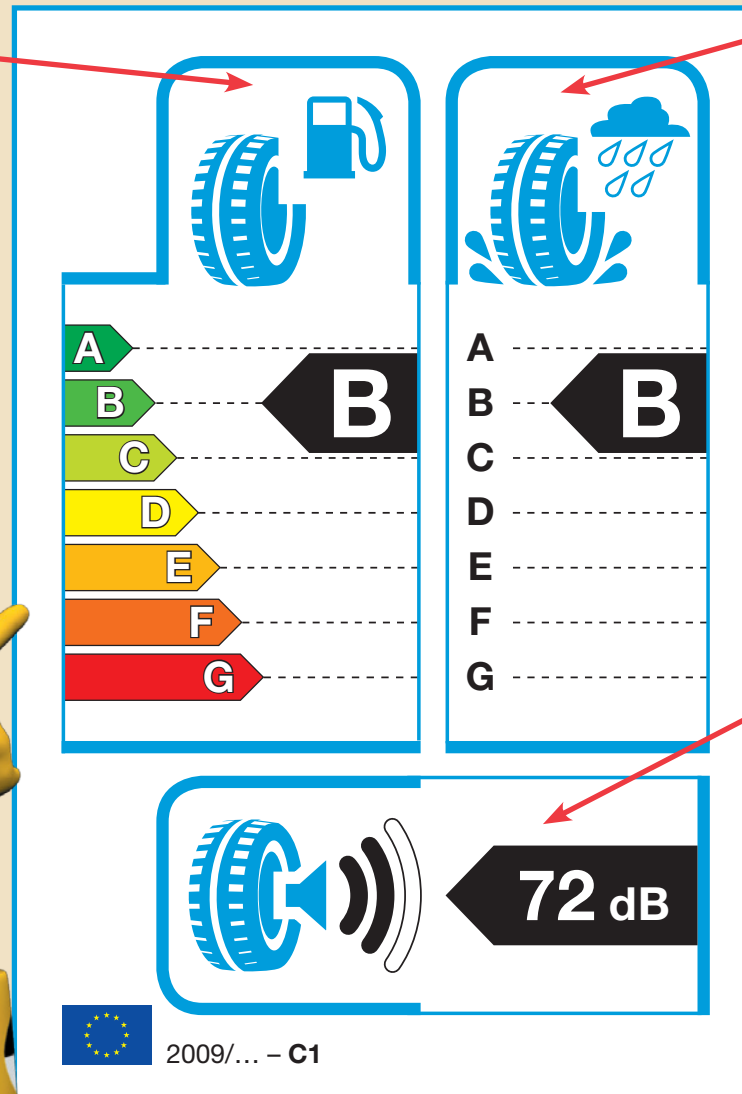
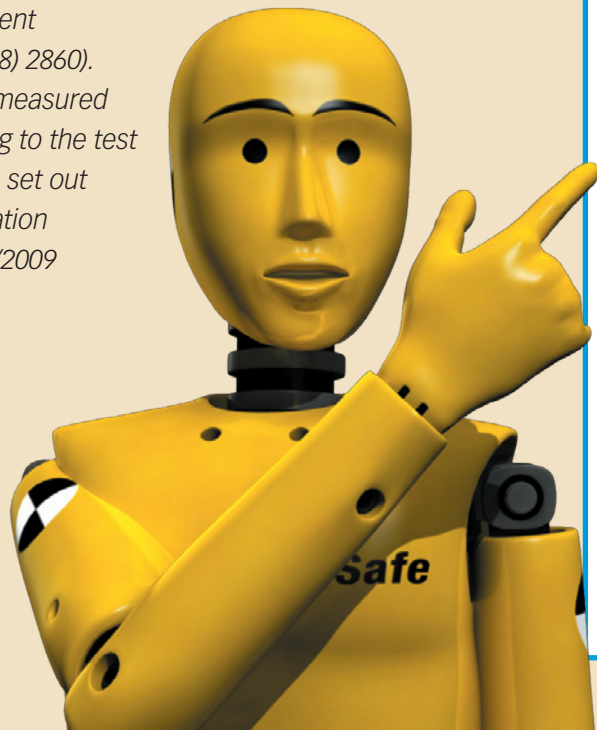
A tyre which is more fuel efficient helps reduce your driving costs and CO₂ emissions. There are seven categories of fuel efficiency on the new labels. Category A is the most efficient and means you will use the least amount of fuel for your journey. Category G is the least fuel efficient.

Choosing A-rated tyres over G-rated tyres could reduce your fuel consumption by 7.5%*

(Source: European Commission impact assessment

SEC (2008) 2860).

** When measured according to the test methods set out in Regulation EC 1222/2009*



WET BRAKING PERFORMANCE

Wet braking performance is critical to your road safety as it affects how quickly you will be able to stop in wet conditions.

Wet braking performance is also categorised in seven classes. An A-rated tyre provides the shortest braking distances on wet roads whereas a G-rated tyre will have the longest braking distance in the wet.

Driving on four A-rated tyres at 50mph can help you stop up to 18m* shorter than if you were driving on four G-rated tyres *(Source: European Commission impact assessment SEC (2008) 2860).* * When measured according to the test methods set out in Regulation EC 1222/2009

EXTERIOR NOISE EMISSION

The final element of the new tyre label is the amount of noise made by a tyre when it rolls along the road surface.

The tyre's exterior noise emission will be shown by a series of black waves. Three black waves indicate that the tyre produces the most amount of noise on the scale. One black wave indicates the tyre emits the lowest level of noise on the scale.